

SINGLE

Technical Data Book

Console 5.2kW, Ceiling 5.2/7.1kW (for EU)

SAMSUNG

Version	Modification	Date	Remark
Ver.1.0	Release SINGLE Console and Ceiling for Europe (R410A, 50Hz, H/P) TDB	14.04.24	
Ver.1.1	Add Note information in Specification regarding EU F-Gas regulation.	15.06.16	
Ver.1.2	Modification of the Note information in Specification.	16.02.02	
Ver.1.3	Add tCO2e data (Specifications)	16.12.09	

Index

1 Nomenclature

2 Specifications (Indoor)

3 Capacity table

4 Dimensional drawing (Indoor)

5 Electrical wiring diagram (Indoor)

6 Sound pressure level (Indoor)

7 Sound power level (Indoor)

8 Sound power level (Outdoor)

1 Nomenclature

Indoor Units

Model Names

AC	026	H	B	M	D	E	H	/	EU
(1)	(2)	(3)	(4)	(5)	(6)	(7)	(8)		Buyer

(1) Classification

AC	CAC
----	-----

(2) Capacity

x 1/10 kW (3 digits)

(3) Version

E	2012
F	2013
H	2014

(4) Product Type

B	Indoor Unit
C	Outdoor Unit

(5) Product Notation

1	1Way Cassette
N	4Way Cassette S (600 X 600)
4	4Way Cassette S
L	LSP Duct
M	MSP Duct
C	Ceiling
J	Console
A	Wall-Mounted

(6) Feature

F	Flagship
S	Standard
D	Deluxe
P	Premium

(7) Rating Voltage

E	1Ø, 220~240V, 50Hz
G	3Ø, 380~415V, 50Hz
K	1Ø, 220~240V, 50/60Hz

(8) Mode

H	Heat Pump(R410A)
C	Cooling Only(R410A)
E	Heat Pump(R22)
D	Cooling Only(R22)

1 Nomenclature

Outdoor Units

Model Names

AC	026	H	C	B	D	E	H	/	EU
(1)	(2)	(3)	(4)	(5)	(6)	(7)	(8)		Buyer

(1) Classification

AC	CAC
----	-----

(2) Capacity

x 1/10 kW (3 digits)

(3) Version

E	2012
F	2013
H	2014

(4) Product Type

B	Indoor Unit
C	Outdoor Unit

(5) Feature 1

A	Inv+Side+General Temp
B	Non Inv+Side+General Temp

(6) Feature2

F	Standrad+Tropical+Non Module
S	Standard
D	Deluxe
P	Premium

(7) Rating Voltage

E	1Ø, 220~240V, 50Hz
G	3Ø, 380~415V, 50Hz
K	1Ø, 220~240V, 50/60Hz
N	3Ø, 380~415V, 50/60Hz

(8) Mode

H	Heat Pump(R410A)
C	Cooling Only(R410A)
E	Heat Pump(R22)
D	Cooling Only(R22)

2 Specifications

Console

Type				Console		
Model Name	Indoor Unit			AC052HBJDEH/EU		
	Outdoor Unit			AC052FCADEH/EU		
System	Mode			Heat Pump		
	Capacity	Cooling(Min/Std/Max)		kW	1.90 / 5.00 / 5.50	
				Btu/h	6,500 / 17,100 / 18,800	
		Heating(Min/Std/Max)		kW	1.50 / 5.60 / 6.50	
				Btu/h	5,100 / 19,100 / 22,200	
	Power	Power Input (Nominal)	Cooling(Min/Std/Max)		kW	0.25 / 1.78 / 2.20
			Heating(Min/Std/Max)		kW	0.25 / 1.92 / 2.50
		Current Input (Nominal)	Cooling(Min/Std/Max)		A	2.60 / 8.00 / 10.00
			Heating(Min/Std/Max)		A	2.30 / 8.70 / 14.00
		MCA			A	10.80 (MCA)
		MFA			A	13.13
	Energy Efficiency	EER (Nominal Cooling)			-	2.81
		COP (Nominal Heating)			-	2.92
		Energy Grade			-	SEER 5.40 (A)
					-	SCOP 3.80 (A)
	Piping Connections	Liquid Pipe		Ø, mm	6.35	
				Ø, inch	1/4"	
		Gas Pipe		Ø, mm	12.70	
				Ø, inch	1/2"	
		Installation Limitation	Max. Length	m	30 (35)	
			Max. Height	m	20 (20)	
	Field Wiring	Power Source Wire		Ø, mm	2.00	
		Transmission Cable		Ø, mm	0.75 ~ 1.25	
	Refrigerant	Type			R410A	
Control Method			-			
Factory Charging			kg / tCO ₂ e			
			1.40 / 2.92			
Indoor Unit	Power Supply			Ø, #, V, Hz		
				1,2,220-240,50		
	Fan	Type		-		
		Motor		Output	W	
						35 x 1
		Air Flow Rate		High/Mid/Low	CMM	
						13.00 / 11.50 / 10.00
				l/s		
					216.67 / 191.67 / 166.67	
	External Static Pressure		Min/Std/Max	mmAq		
					-	
					Pa	
					-	
	Drain Pipe			Ø,mm		
				ID18 HOSE		
	Sound	Pressure		High/Mid/Low	dB(A)	
						44.0 / 34.5 / 25.0
			Power	Cooling	60.0	
	External Dimension	Net Weight			kg	
					15.20	
		Shipping Weight			kg	
					20.30	
	Net Dimensions (WxHxD)			mm		
				720 x 620 x 199		
Shipping Dimensions (WxHxD)			mm			
			810 x 710 x 299			
Panel Size	Panel model			-		
	Panel Net Weight			kg		
				-		
	Shipping Weight			kg		
				-		
Net Dimensions (WxHxD)			mm			
			-			
Shipping Dimensions (WxHxD)			mm			
			-			
Additional Accessories	Drain pump	Drain pump		-		
		Max. Lifting		mm/liter/h		
				-		
Air Filter			-			
			-			
Outdoor Unit	Power Supply			Ø, #, V, Hz		
				1,2,220-240,50		
	Compressor	Type			-	
					Twin BLDC Rotary	
		Model			-	
					UG4T150FUDJQDO	
	Output			kW		
				1.37		
	Oil	Type		-		
				POE		
	Fan	Air Flow Rate	Cooling		CMM	
					33.00	
			l/s		550.00	
	Sound	Pressure	Cooling/Heating		dB(A)	
					49.0 / 49.0	
			Power	Cooling	64.0	
	External Dimension	Net Weight			kg	
					38.50	
		Shipping Weight			kg	
					42.50	
	Net Dimensions (WxHxD)			mm		
				790 x 548 x 285		
	Shipping Dimensions (WxHxD)			mm		
				926 x 655 x 382		
Operating Temp. Range	Cooling		°C			
			-15.0 ~ 46.0			
		Heating		°C		
				-15.0 ~ 24.0		

* All figures comply with EN14511

- Nominal cooling capacities are based on;

Indoor temperature : 27°C DB, 19°C WB / Outdoor temperature : 35°C DB, Refrigerant piping : 5m , Level differences : 0m

- Nominal heating capacities are based on;

Indoor temperature : 20°C DB, 15°C WB / Outdoor temperature : 7°C DB, 6°C WB, Refrigerant piping : 5m, Level differences : 0m

- Sound level was acquired in an anechoic room. Thus actual noise level may be different depending on the installation conditions.

- Specifications may be subject to change without prior notice.

- These products contain R410A(GWP=2,088) which is fluorinated greenhouse gas.

2 Specifications

Ceiling

Type				Ceiling	Ceiling		
Model Name	Indoor Unit			AC052HBCDEH/EU	AC071HBCDEH/EU		
	Outdoor Unit			AC052FCADEH/EU	AC071FCADEH/EU		
System	Mode			Heat Pump	Heat Pump		
	Capacity	Cooling(Min/Std/Max)		kW	1.70 / 5.00 / 5.60	2.20 / 7.10 / 8.00	
				Btu/h	5,800 / 17,100 / 19,100	7,500 / 24,200 / 27,300	
		Heating(Min/Std/Max)		kW	1.70 / 6.00 / 7.70	1.90 / 8.00 / 9.00	
				Btu/h	5,800 / 20,500 / 26,300	6,500 / 27,300 / 30,700	
	Power	Power Input (Nominal)	Cooling(Min/Std/Max)	kW	0.48 / 1.66 / 1.90	0.35 / 2.36 / 4.00	
			Heating(Min/Std/Max)		0.43 / 1.87 / 3.05	0.35 / 2.75 / 4.00	
		Current Input (Nominal)	Cooling(Min/Std/Max)	A	2.80 / 7.80 / 9.00	2.00 / 10.50 / 21.00	
			Heating(Min/Std/Max)		2.40 / 8.80 / 14.50	2.00 / 12.60 / 21.00	
		MCA		A	10.80 (MCA)	20.30 (MCA)	
		MFA		A	13.13	25.00	
	Energy Efficiency	EER (Nominal Cooling)		-	3.01	3.01	
		COP (Nominal Heating)		-	3.21	2.91	
		Energy Grade		-	SEER 5.90 (A+)	SEER 5.30 (A)	
				-	SCOP 3.80 (A)	SCOP 3.80 (A)	
	Piping Connections	Liquid Pipe		Ø, mm	6.35	6.35	
				Ø, inch	1/4"	1/4"	
		Gas Pipe		Ø, mm	12.70	15.88	
				Ø, inch	1/2"	5/8"	
		Installation Limitation	Max. Length	m	30 (35)	50 (55)	
Max. Height			m	20 (20)	30 (30)		
Field Wiring	Power Source Wire		Ø, mm	2.00	2.50 ~ 4.00		
	Transmission Cable		Ø, mm	0.75 ~ 1.25	0.75 ~ 1.25		
Refrigerant	Type		-	R410A	R410A		
	Control Method		-	-	-		
	Factory Charging		kg / tCO2e	1.40 / 2.92	1.80 / 3.76		
Indoor Unit	Power Supply			Ø, #, V, Hz	1,2,220-240,50	1,2,220-240,50	
	Fan	Type		-	Blower	Blower	
		Motor	Output		W	40 x 2	40 x 2
			Air Flow Rate		High/Mid/Low	CMM	13.50 / 12.50 / 11.50
					l/s	225.00 / 208.33 / 191.67	275.00 / 250.00 / 233.33
		External Static Pressure		Min/Std/Max	mmAq	-	-
				Pa	-	-	
	Drain			Drain Pipe	Ø,mm	ID18 HOSE	ID18 HOSE
	Sound	Pressure		High/Mid/Low		41.0 / 39.0 / 37.0	46.0 / 44.0 / 42.0
		Power	Cooling			60.0	64.0
	External Dimension	Net Weight		kg	20.00	22.50	
		Shipping Weight		kg	26.00	26.50	
		Net Dimensions (WxHxD)		mm	1,000 x 200 x 650	1,000 x 200 x 650	
		Shipping Dimensions (WxHxD)		mm	1,080 x 300 x 730	1,080 x 300 x 730	
	Panel Size	Panel model		-	-	-	
		Panel Net Weight		kg	-	-	
		Shipping Weight		kg	-	-	
		Net Dimensions (WxHxD)		mm	-	-	
	Shipping Dimensions (WxHxD)		mm	-	-		
	Additional Accessories	Drain pump	Drain pump	-	-	-	
Max. Lifting		Max. Lifting	mm/liter/h	-	-		
Air Filter			-	-	-		
Outdoor Unit	Power Supply			Ø, #, V, Hz	1,2,220-240,50	1,2,220-240,50	
	Compressor	Type		-	Twin BLDC Rotary	Twin BLDC Rotary	
		Model		-	UG4T150FUDJQDO	UG4T200FUAE4	
		Output		kW	1.37	1.79	
	Oil	Type		-	POE	POE	
		Air Flow Rate		Cooling	CMM	33.00	52.00
	Sound				l/s	550.00	866.67
		Pressure	Cooling/Heating			49.0 / 49.0	49.0 / 51.0
		Power	Cooling			64.0	66.0
	External Dimension	Net Weight		kg	38.50	55.00	
		Shipping Weight		kg	42.50	59.00	
		Net Dimensions (WxHxD)		mm	790 x 548 x 285	880 x 798 x 310	
		Shipping Dimensions (WxHxD)		mm	926 x 655 x 382	1,024 x 920 x 414	
	Operating Temp. Range	Cooling		°C	-15.0 ~ 46.0	-15.0 ~ 46.0	
		Heating		°C	-15.0 ~ 24.0	-20.0 ~ 24.0	

* All figures comply with EN14511

- Nominal cooling capacities are based on;

Indoor temperature : 27°C DB, 19°C WB / Outdoor temperature : 35°C DB, Refrigerant piping : 5m , Level differences : 0m

- Nominal heating capacities are based on;

Indoor temperature : 20°C DB, 15°C WB / Outdoor temperature : 7°C DB, 6°C WB, Refrigerant piping : 5m, Level differences : 0m

- Sound level was acquired in an anechoic room. Thus actual noise level may be different depending on the installation conditions.

- Specifications may be subject to change without prior notice.

- These products contain R410A(GWP=2,088) which is fluorinated greenhouse gas.

3 Capacity table

Console

AC052HBJDEH/EU + AC052FCADEH/EU

Cooling

TC(Total Capacity), SHC(Sensible Heat Capacity), PI(Power Input)

Outdoor temperature (°C, DB)	Indoor temperature (°C, WB)																	
	14.0			16.0			18.0			19.0			22.0			24.0		
	TC	SHC	PI	TC	SHC	PI	TC	SHC	PI	TC	SHC	PI	TC	SHC	PI	TC	SHC	PI
-15.0	5.37	4.03	0.91	5.51	4.13	0.93	5.64	4.23	0.96	5.78	4.34	0.98	5.92	4.44	1.00	6.06	4.55	1.03
21.0	5.46	4.09	1.25	5.59	4.19	1.28	5.73	4.30	1.31	5.87	4.40	1.34	6.01	4.51	1.37	6.16	4.62	1.41
35.0	4.65	3.49	1.65	4.76	3.57	1.70	4.88	3.66	1.74	5.00	3.75	1.78	5.12	3.84	1.82	5.24	3.93	1.87
46.0	4.26	3.19	2.18	4.36	3.27	2.24	4.47	3.35	2.29	4.58	3.44	2.35	4.69	3.52	2.41	4.80	3.60	2.46

Heating

TC : Total Capacity, PI: Power Input

Outdoor temperature (°C, DB)	Indoor temperature (°C, DB)											
	16.0		18.0		20.0		21.0		22.0		24.0	
	TC	PI	TC	PI	TC	PI	TC	PI	TC	PI	TC	PI
	kW	kW	kW	kW	kW	kW	kW	kW	kW	kW	kW	kW
-15.0	3.86	2.30	3.82	2.27	3.78	2.25	3.74	2.23	3.70	2.21	3.67	2.18
-10.0	5.07	2.54	5.02	2.51	4.97	2.49	4.92	2.47	4.87	2.44	4.82	2.42
7.0	5.71	1.96	5.66	1.94	5.60	1.92	5.54	1.90	5.49	1.88	5.43	1.86
24.0	6.38	1.82	6.31	1.80	6.25	1.78	6.19	1.76	6.13	1.74	6.06	1.73

- Capacities are based on following conditions;

- . Cooling mode indoor air temperature (°C, DB/WB) : 20/14, 22/16, 25/18, 27/19, 30/22, 32/24
- . Heating mode outdoor air : 85%RH. However, the condition rated capacity is 7°C DB / 6°C WB.
- . Refrigerant piping length : 5m
- . Level difference : 0m.

3 Capacity table

Ceiling

AC052HBCDEH/EU + AC052FCADEH/EU

Cooling

TC(Total Capacity), SHC(Sensible Heat Capacity), PI(Power Input)

Outdoor temperature (°C, DB)	Indoor temperature (°C, WB)																	
	14.0			16.0			18.0			19.0			22.0			24.0		
	TC	SHC	PI	TC	SHC	PI	TC	SHC	PI	TC	SHC	PI	TC	SHC	PI	TC	SHC	PI
-15.0	5.15	3.86	1.40	5.28	3.96	1.44	5.41	4.06	1.47	5.54	4.16	1.51	5.67	4.25	1.55	5.81	4.36	1.58
21.0	5.20	3.90	1.39	5.32	3.99	1.42	5.46	4.09	1.45	5.59	4.19	1.49	5.72	4.29	1.53	5.86	4.40	1.56
35.0	4.65	3.49	1.54	4.76	3.57	1.58	4.88	3.66	1.62	5.00	3.75	1.66	5.12	3.84	1.70	5.24	3.93	1.74
46.0	4.00	3.00	2.14	4.10	3.07	2.19	4.20	3.15	2.24	4.30	3.23	2.30	4.40	3.30	2.36	4.51	3.38	2.41

Heating

TC : Total Capacity, PI: Power Input

Outdoor temperature (°C, DB)	Indoor temperature (°C, DB)											
	16.0		18.0		20.0		21.0		22.0		24.0	
	TC	PI	TC	PI	TC	PI	TC	PI	TC	PI	TC	PI
-15.0	3.95	2.14	3.91	2.12	3.87	2.10	3.83	2.08	3.79	2.06	3.76	2.04
-10.0	4.90	2.25	4.85	2.23	4.80	2.21	4.75	2.19	4.70	2.17	4.66	2.14
7.0	6.12	1.91	6.06	1.89	6.00	1.87	5.94	1.85	5.88	1.83	5.82	1.81
24.0	7.75	1.88	7.68	1.86	7.60	1.84	7.52	1.82	7.45	1.80	7.37	1.79

AC071HBCDEH/EU + AC071FCADEH/EU

Cooling

TC(Total Capacity), SHC(Sensible Heat Capacity), PI(Power Input)

Outdoor temperature (°C, DB)	Indoor temperature (°C, WB)																	
	14.0			16.0			18.0			19.0			22.0			24.0		
	TC	SHC	PI	TC	SHC	PI	TC	SHC	PI	TC	SHC	PI	TC	SHC	PI	TC	SHC	PI
-15.0	6.83	5.47	1.16	7.00	5.60	1.19	7.17	5.74	1.22	7.35	5.88	1.25	7.53	6.02	1.28	7.71	6.17	1.31
21.0	6.70	5.36	1.58	6.87	5.49	1.62	7.04	5.63	1.66	7.21	5.77	1.70	7.38	5.91	1.74	7.56	6.05	1.78
35.0	6.60	5.28	2.19	6.76	5.41	2.25	6.93	5.54	2.30	7.10	5.68	2.36	7.27	5.82	2.42	7.44	5.96	2.47
43.0	5.37	4.30	2.48	5.51	4.40	2.54	5.64	4.51	2.61	5.78	4.62	2.67	5.92	4.73	2.73	6.06	4.85	2.80
50.0	4.76	3.81	2.58	4.88	3.90	2.65	5.00	4.00	2.71	5.12	4.10	2.78	5.24	4.19	2.85	5.37	4.29	2.92

Heating

TC : Total Capacity PI: Power Input

Outdoor temperature (°C, DB)	Indoor temperature (°C, DB)											
	16.0		18.0		20.0		21.0		22.0		24.0	
	TC	PI	TC	PI	TC	PI	TC	PI	TC	PI	TC	PI
-15.0	5.34	3.11	5.28	3.08	5.23	3.05	5.18	3.02	5.13	2.99	5.07	2.96
-10.0	6.88	2.93	6.81	2.90	6.74	2.87	6.67	2.84	6.61	2.81	6.54	2.78
7.0	8.16	2.81	8.08	2.78	8.00	2.75	7.92	2.72	7.84	2.70	7.76	2.67
24.0	8.61	2.90	8.52	2.87	8.44	2.84	8.36	2.81	8.27	2.78	8.19	2.76

- Capacities are based on following conditions:

- . Cooling mode indoor air temperature (°C, DB/WB) : 20/14, 22/16, 25/18, 27/19, 30/22, 32/24
- . Heating mode outdoor air : 85%RH. However, the condition rated capacity is 7°C DB / 6°C WB.
- . Refrigerant piping length : 5m
- . Level difference : 0m.

4 Dimensional drawing

Console

AC052HBJDEH/EU

Units : mm / inches

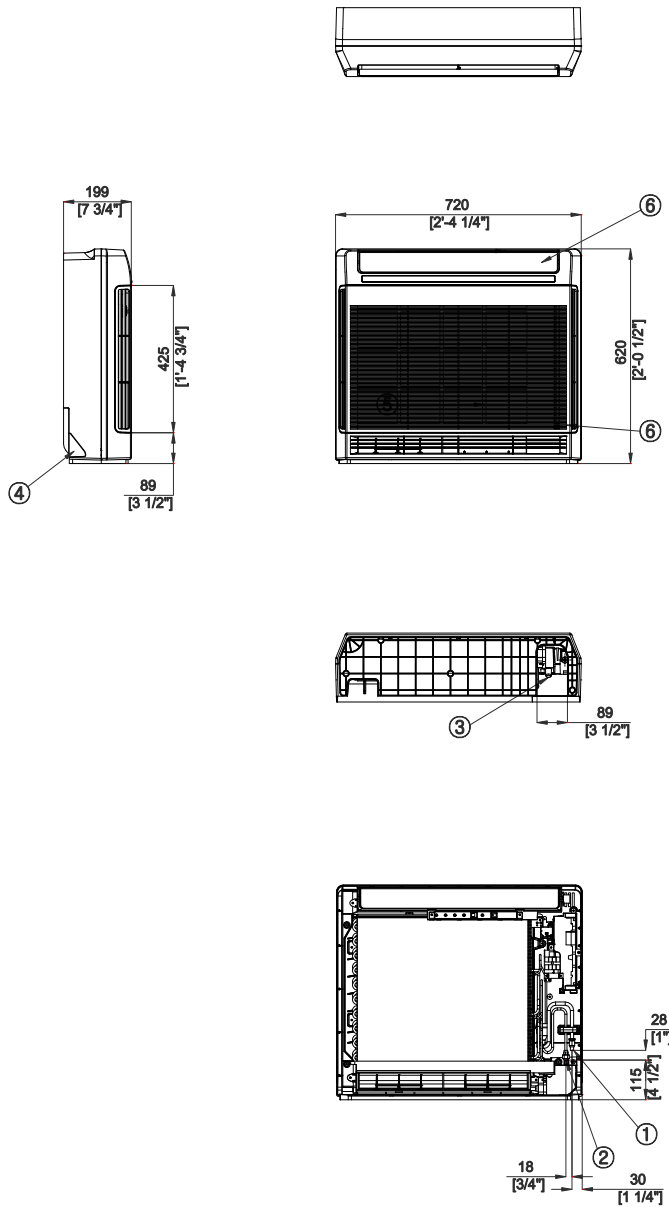


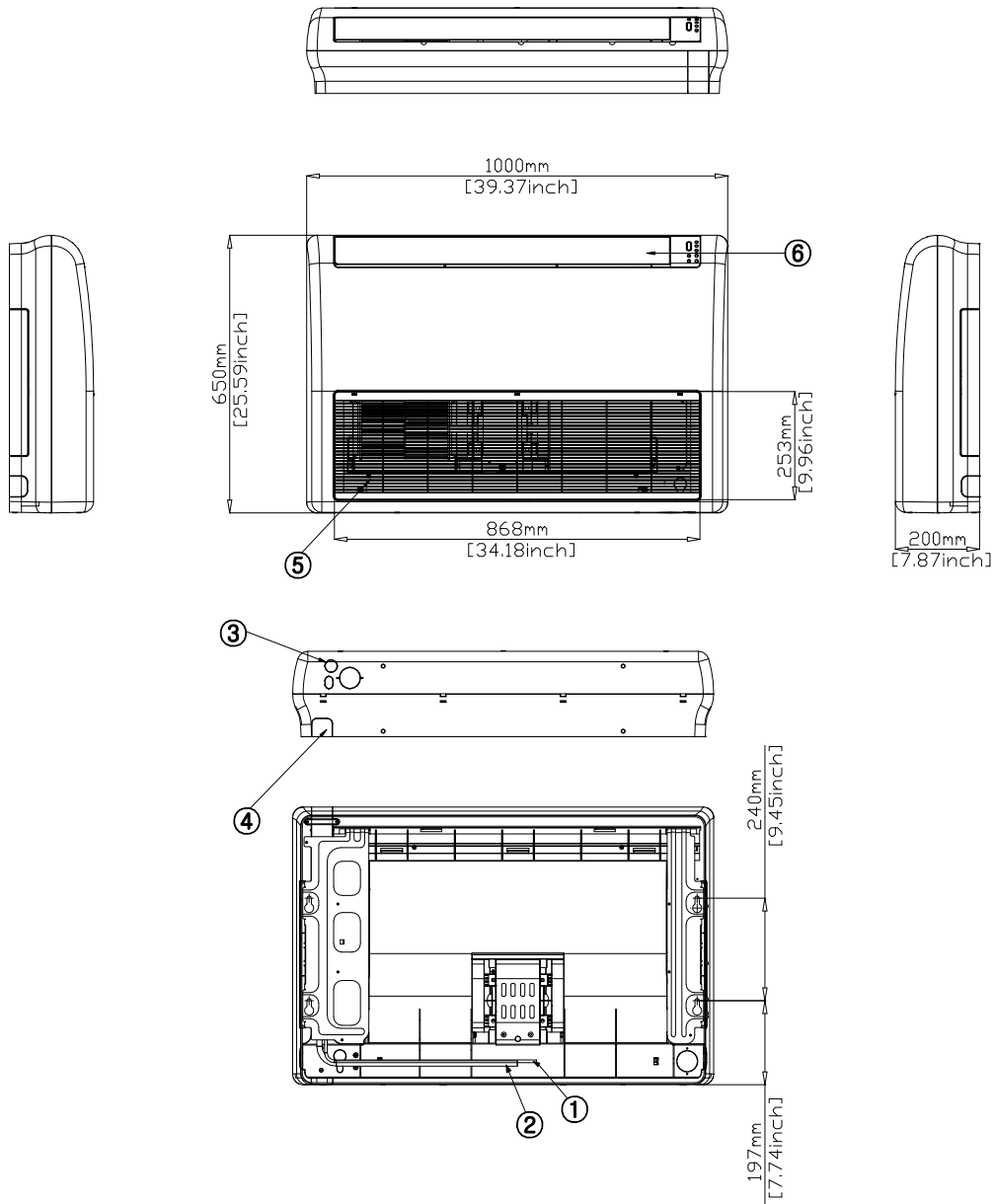
Table of descriptions

1	Refrigerant gas pipe	7	
2	Refrigerant liquid pipe	8	
3	Condensate drain	9	
4	Power & Comm. wiring conduits	10	
5	Air Inlet grille	11	
6	Air Outlet grille	12	

4 Dimensional drawing

Ceiling

AC052HBCDEH/EU, AC071HBCDEH/EU

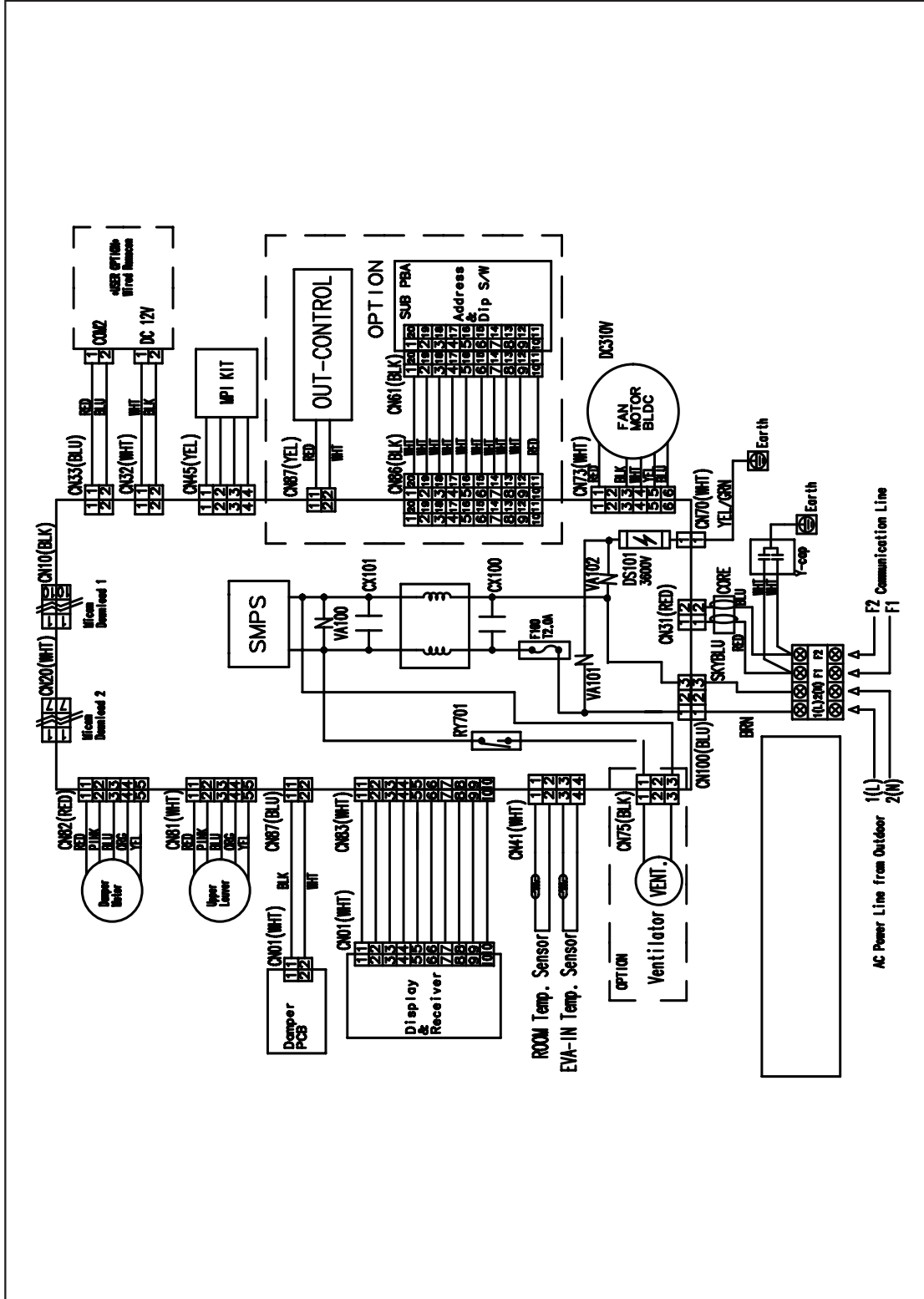


No.	Name
①	Liquid Ref. Pipe
②	Gas Ref. Pipe
③	Drain pipe connection
④	Power & Communication Wiring Conduit
⑤	Air inlet grille
⑥	Air outlet louver

5 Electrical wiring diagram

Console

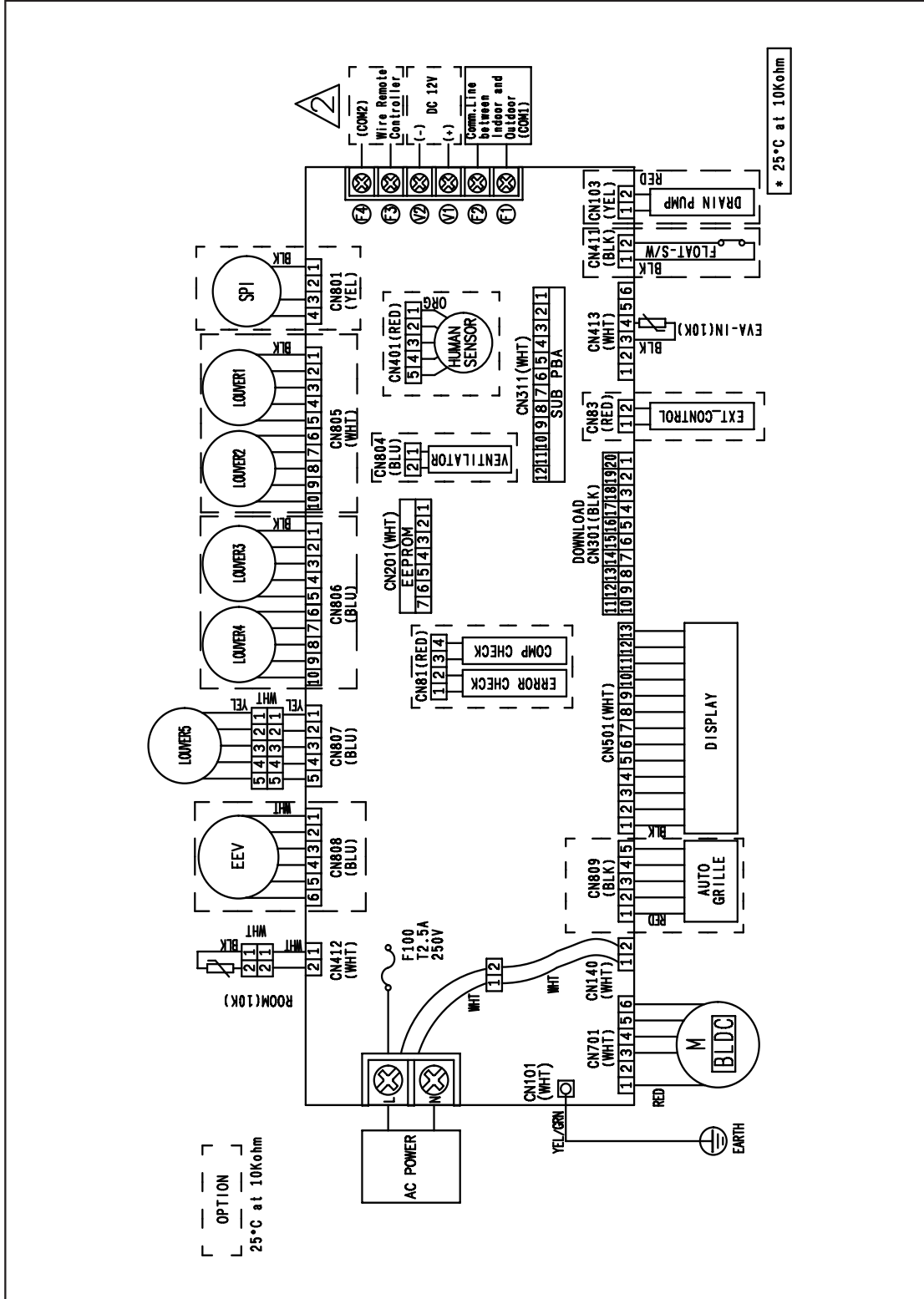
AC052HBJDEH/EU



5 Electrical wiring diagram

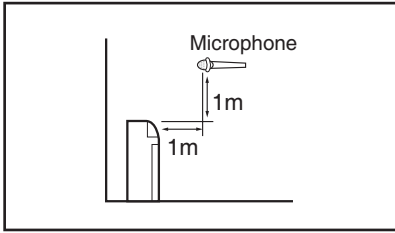
Ceiling

AC052HBCDEH/EU, AC071HBCDEH/EU



6 Sound pressure level

Console



Unit: dB(A)

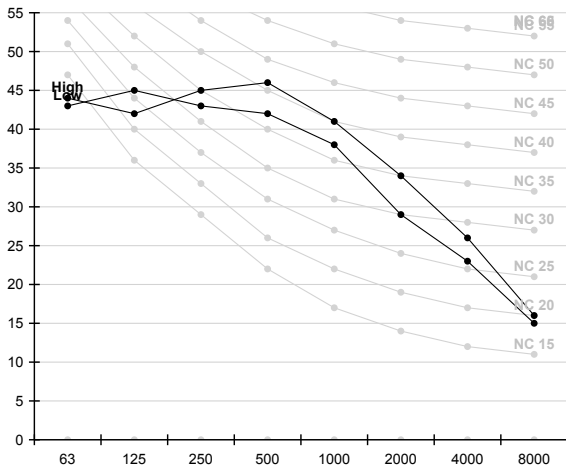
Model	High	Low
AC052HBJDEH/EU (ODU : AC052FCADEH/EU)	44.0	25.0

Note

- > Measuring place: Anechoic chamber (conversion value)
- > These operation values were obtained in an anechoic room. Sound pressure level will vary depending on a range of factors such as the construction of the particular room where the equipment is installed.
- > Operation sound level may differ depending on operation and ambient conditions.)

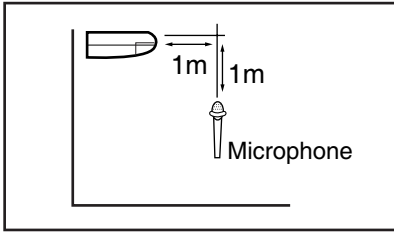
NC curve

1) AC052HBJDEH/EU (ODU : AC052FCADEH/EU)



6 Sound pressure level

Ceiling



Unit: dB(A)

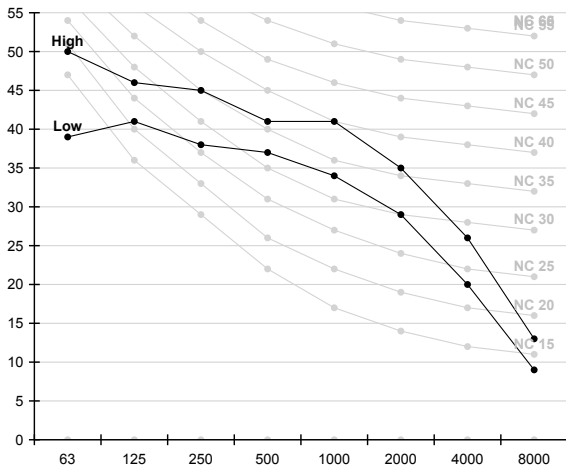
Model	High	Low
AC052HBCDEH/EU (ODU : AC052FCADDEH/EU)	41.0	37.0
AC071HBCDEH/EU (ODU : AC071FCADDEH/EU)	46.0	42.0

Note

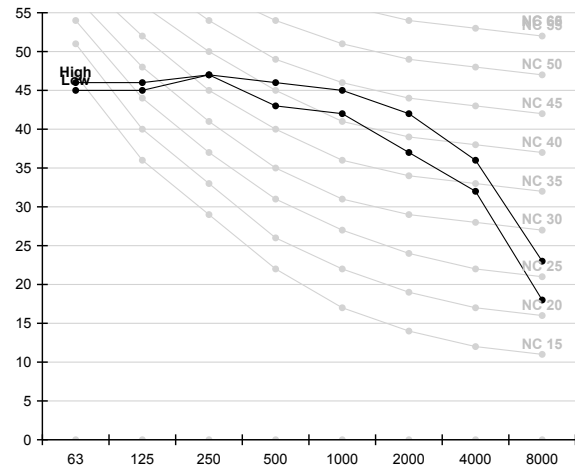
- > Measuring place: Anechoic chamber (conversion value)
- > These operation values were obtained in an anechoic room. Sound pressure level will vary depending on a range of factors such as the construction of the particular room where the equipment is installed.
- > Operation sound level may differ depending on operation and ambient conditions.)

NC curve

1) AC052HBCDEH/EU (ODU : AC052FCADDEH/EU)



2) AC071HBCDEH/EU (ODU : AC071FCADDEH/EU)



7 Sound power level

Console

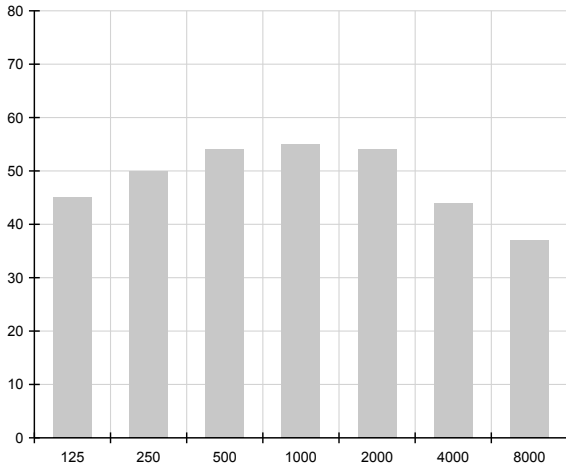
Note

dBA = A-weighted sound power level.
Reference power : 1pW.
Measured according to ISO 3741.

Unit: dB(A)

Model	Power
AC052HBJDEH/EU (ODU : AC052FCADDEH/EU)	60.0

1) AC052HBJDEH/EU (ODU : AC052FCADDEH/EU)



7 Sound power level

Ceiling

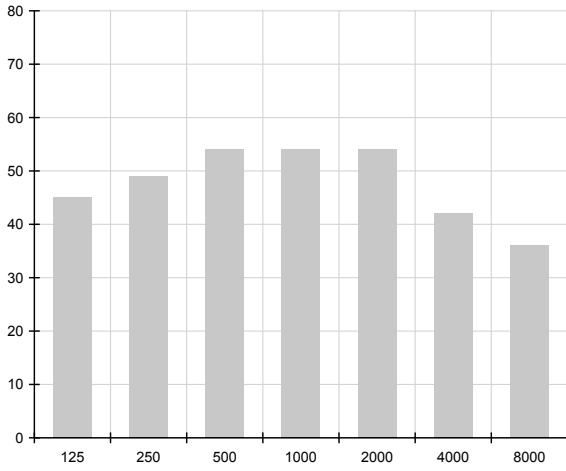
Note

dBA = A-weighted sound power level.
Reference power : 1pW.
Measured according to ISO 3741.

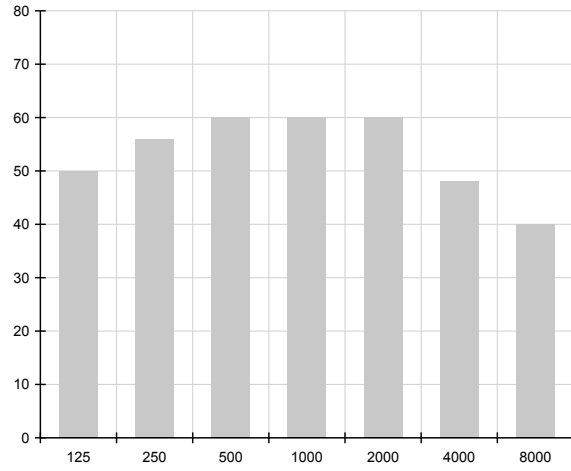
Unit: dB(A)

Model	Power
AC052HBCDEH/EU (ODU : AC052FCADEH/EU)	60.0
AC071HBCDEH/EU (ODU : AC071FCADEH/EU)	64.0

1) AC052HBCDEH/EU (ODU : AC052FCADEH/EU)



2) AC071HBCDEH/EU (ODU : AC071FCADEH/EU)



8 Sound power level

Outdoor

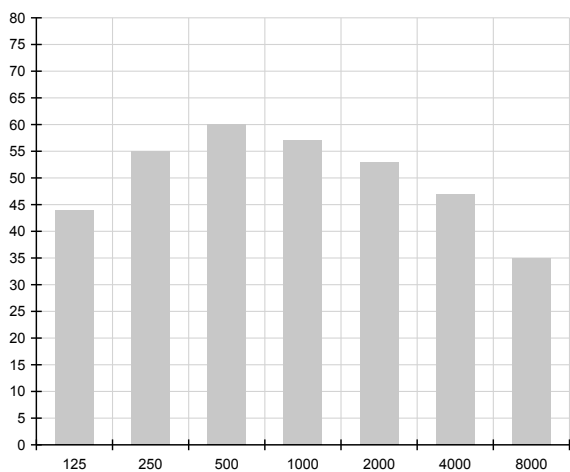
Note

dBA = A-weighted sound power level.
Reference power : 1pW.
Measured according to ISO 3741.

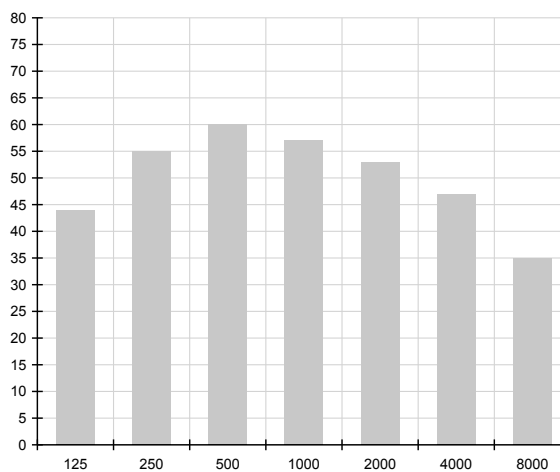
Unit: dB(A)

Model	Power
AC052FCADEH/EU (IDU : AC052HBCDEH/EU)	64.0
AC052FCADEH/EU (IDU : AC052HBJDEH/EU)	64.0
AC071FCADEH/EU (IDU : AC071HBCDEH/EU)	66.0

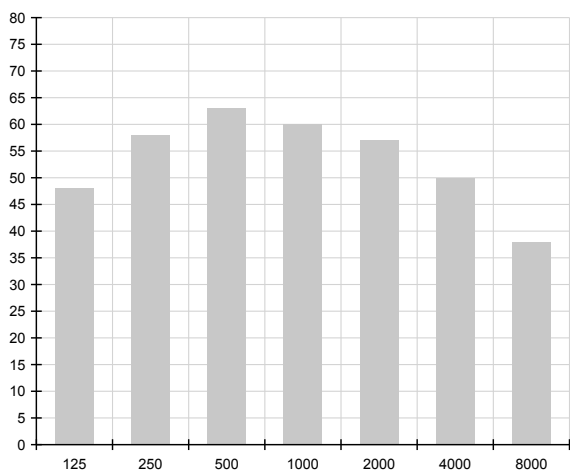
1) AC052FCADEH/EU (IDU : AC052HBCDEH/EU)



2) AC052FCADEH/EU (IDU : AC052HBJDEH/EU)



3) AC071FCADEH/EU (IDU : AC071HBCDEH/EU)



2015.06
Ver 1.1



Samsung Electronics Co., LTD.
B2B PM / SE

Head Office (Suwon Korea) 129, Samsung-Ro, Yeongtong-Gu, Suwon City, Gyeonggi-Do, Korea 443-742
Website : www.samsung.com/global/business/system-air-conditioner Email : airconditioner@samsung.com
Images and data in this book may subject to change without prior notice.